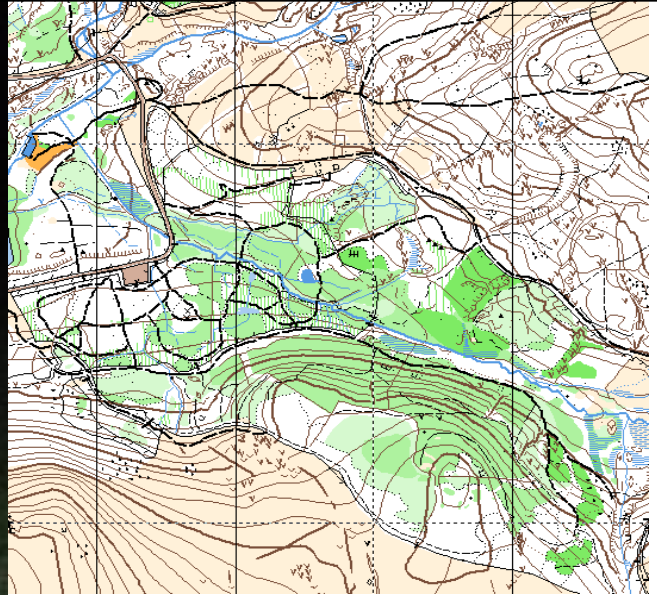


Devon and Cornwall Night League 2018-19



Test your orienteering skills in the dark and add that extra dimension to provide the ultimate navigational challenge.

1. Sat 3rd Nov Norsworthy Bridge, Devon
2. Sat 17th Nov Lanhydrock, Cornwall
3. Sat 5th Jan Haldon, Devon
4. Sat 2nd Feb Mt Edgcumbe, Cornwall
5. Sat 2nd Mar Virtuous Lady, Devon
6. Sat 9th Mar Cardinham, Cornwall

Three courses

Green Technical for the experienced.

Jade Technical for the experienced but less physical.

Orange All controls on paths and tracks ideal for 1st time night orienteers

Actual Distance and climb details will be published at events.

League winners will be best 3 results from 6 events including 1 from other Club in each category

Whistles are compulsory and carry 2 x torches

Cagoules are advised and may be compulsory weather dependant

Start when dark - or dusk for non-competitive and inexperienced orienteers if possible.

Usual times are Registration from about 1700, starts usually between 1800 and 1830

Courses usually close between 1900 and 1930

Entries £5 for Adults and Groups, £3 Juniors, £1.00 dibber hire

We meet for food and drink at a local hostelry afterwards to discuss how many and big our errors were. (Not compulsory !)

Tips for the night:

1. If you can turn the dark into daylight with a good torch it helps
2. Sometimes walking is faster than running
3. Stick to obvious paths where possible

For further details see <http://www.devonorienteering.co.uk/events>